

surgicalscience



Simbionix EndoSim®



## EndoSim® - THE REALISTIC TRAINING SIMULATOR FOR ENDOSCOPY

### Key Features

- True-to-life physiological responses and tool behavior.
- Comprehensive training package, including
- convenient course planning features.
- Customizable skill training and case scenarios.
- Extensive performance metrics.
- The only detachable haptic desktop unit for enhanced portability and usability.





Using the most advanced tube simulation on the market, lifelike anatomical details, and realistic feedback, physicians can now experience diverse training scenarios while building confidence and proficiency. EndoSim delivers medical simulation training with unequaled graphics, usability and tactile feedback.

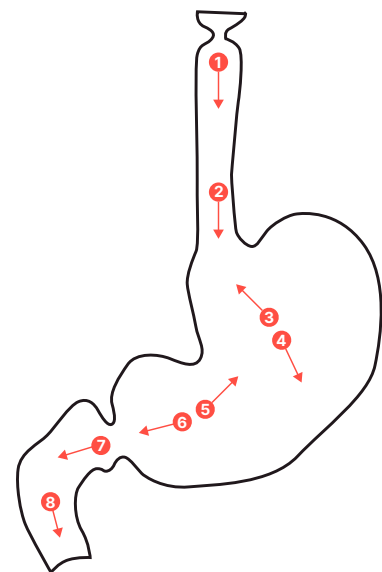
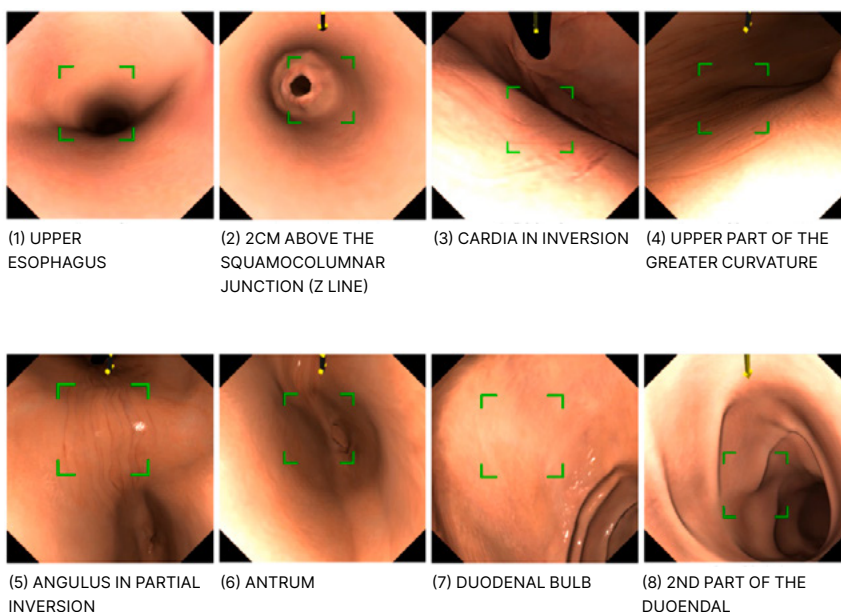
## NEW: Upper Gastrointestinal Examination

### Our latest update includes:

- ESGE guidelines for image documentation
- Guided photo positioning in upper GI

### Key Features

Learn how to perform a complete upper gastrointestinal examination by photographing the eight anatomical locations defined in the European Society of Gastrointestinal Endoscopy (ESGE) Guidelines\*



By documenting the examination with images, the trainee can hone and demonstrate the technical skills needed to access the esophago-gastro-duodenum tract. Target locations can be selected or deselected in any order. Included in two new default courses.

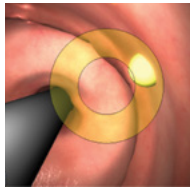
\*J.-F. Rey, R. Lambert and the ESGE Quality Assurance Committee, ESGE Recommendations for Quality Control in Gastrointestinal Endoscopy: Guidelines for Image Documentation in Upper and Lower GI Endoscopy 2001

# Library of Modules

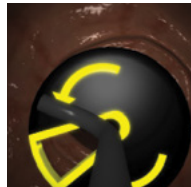
## Fundamental Endoscopic Skills

With EndoSim®, basic skills techniques can be practiced again and again at increasing levels of difficulty with customizable challenges, scenarios and complications to make each experience unique. Each exercise is digitally recorded with detailed metrics and statistics, providing both immediate and long-term skill development feedback.

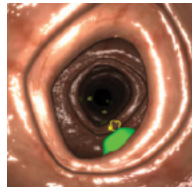
Developed to help prepare trainees for assessment of the fundamental skills required in flexible endoscopic surgery. Skills included are: navigation, mucosal examination, targeting, retroflexion and loop reduction.



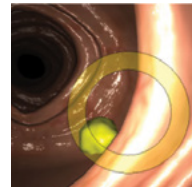
NAVIGATION



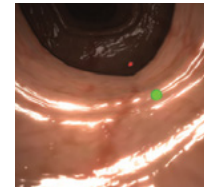
SCOPE HANDLING



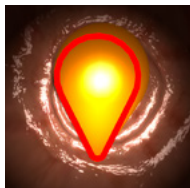
BUTTON HANDLING



KNOB HANDLING



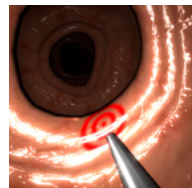
VISUALIZE COLON



NAVIGATION



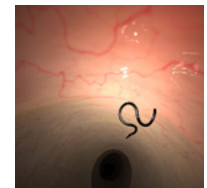
MUCOSAL  
EXAMINATION



TARGETING



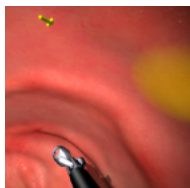
RETROFLEXION



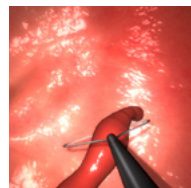
LOOP REDUCTION

## Therapeutic Skills

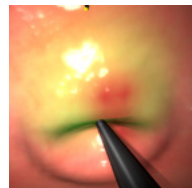
The scope features an active channel for biopsy forceps, endoscopic snare, and injector allowing trainees to learn and master key clinical skills related to pathology biopsy, polypectomy biopsy and injection sclerotherapy.



PATHOLOGY  
BIOPSY



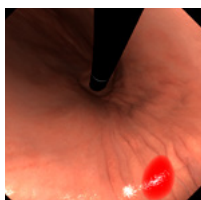
POLYPECTOMY  
BIOPSY



INJECTION  
SCLEROTHERAPY

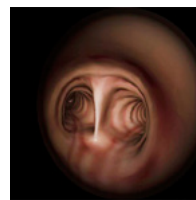
## Procedure Modules

Maximize technical skills and minimize risks before meeting a patient for the first time.



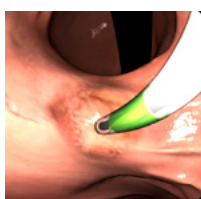
### UPPER GI: GASTROSCOPY INTUBATION

Our upper GI exercises give trainees the chance to train on navigation to duodenum and back, mucosal examination, photo documentation and biopsy sampling.



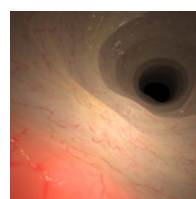
### BRONCHOSCOPY

The Bronchoscopy module offers training on full airway examination, and specific segment targeting, as well as diagnostic procedures (Cytobrush, BAL) and Foreign Body Removal.



### UPPER GI: ERCP

The EndoSim® ERCP module offers training on Endoscopic Retrograde Cholangiopancreatography in a realistic environment, with focus on the challenging bile duct cannulation. EndoSim ERCP features a split-screen for simultaneous display of endoscopic and fluoroscopic views.



### LOWER GI: COLONOSCOPY INTUBATION

Avoid creating loops as you navigate to cecum, in this series of lower GI cases at different difficulty levels.

# EndoSim® - Patient Safety First

## Service and Support

We want to make sure your simulator system is running at its optimum performance level, by encouraging you to sign up for our Full Service Program.

As a Full Service Program customer, you will have all the latest features to fully take advantage of your investment and you will control your service costs and minimize downtime.

## The Endosim Haptic System Includes:

- Haptic hardware platform with force feedback on insertion and rotation, also working as a detachable desktop unit.
- Bronchoscopy set with add-on top console.
- Scopes for gastroscopy, colonoscopy, bronchoscopy with full insertion length tubes and tool channel
- 6 software modules.
- User-friendly administration mode for course planning, follow-up and exercise configuration.
- Pre-loaded courses.
- All necessary computer and monitor hardware.





*"This is a very useful tool in teaching the basics of upper- and lower GI endoscopy. The registrars especially enjoyed the opportunity to hone their skills without fears of harming a patient - to the extent that they requested more time to practice on it!"*

**Jan Van Zyl**

Associate Professor,  
University of the Free State

**surgicalscience** | Symbionix Simulators

Drakegatan 7 A | 412 50 Göteborg, Sweden | Tel +46 31 741 65 60  
[www.surgicalscience.com](http://www.surgicalscience.com)

Request a demo or more information at [info@surgicalscience.com](mailto:info@surgicalscience.com)



SCAN ME