

# LAPSIM<sup>®</sup> 2021 ANNUAL UPDATE

## LAPAROSCOPY TRAINING JUST GOT BETTER

LapSim – a leading virtual reality training simulator – is celebrating its latest update!

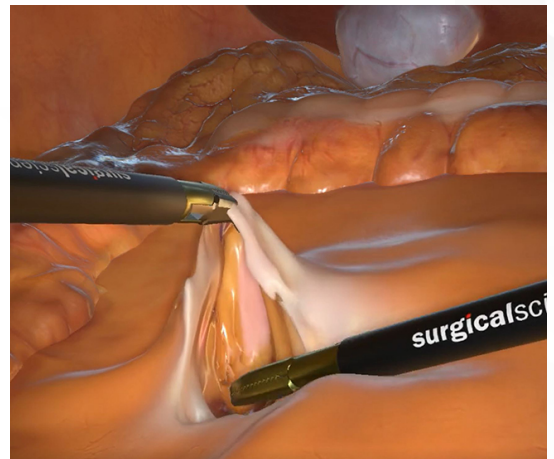
### New Colorectal Procedure Module

Includes the first critical step of a right-side hemicolectomy procedure: the division of the ileocolic vessels.

Comes with new active third-hand grasper management, allowing for dissection using both hands.

### New function for instructions and warnings

Dr. LapSim has been replaced by messages where instructions, confirmations warnings and fatal errors can be distinguished by the color of the message. The new functionality allows the instructor to switch warnings & fatal errors and instructions & confirmations separately.



### Software prepared for hardware upgrade

§ H\Y &\$&%&'j Yfg]cb`]g`dfYdUFYX`Zcf`h\Y`UFxk UFY`i d[ fUXY`Vta`]b[ `h`g`ZJ`zk` \YFY`h\Y`g]XY`hci`W`gWYYb`Wb`VY`fYd`UWX`k`]h`U`fUW`dUX`"

### Brand new instrument models with an improved visual appearance, with subtle and more realistic lighting and shading.

- § Brand new instrument models with an improved visual appearance, with subtle and more realistic lighting and shading.
- § New Curved Ultrasonic instrument.
- § New 30mm stapler model in Appendectomy Procedure Module.

### Hysterectomy: Ligaments & Uterine Vessels.

- § Hysterectomy: Ligaments & Uterine Vessels.
- § Hysterectomy: Colpotomy.

### Software Updates

- The box environment in Task Training has a new design and is now the same in all of these exercises.
- Vessel sealer/divider sound when coagulating now depend on the rate of coagulation in grasped tissue rather than just a fixed time.
- New outline of demo course with better overview, where exercises categorized into modules.
- Improvement of the collisions in the cholecystectomy, which means that the risk of the detached gallbladder slipping under the liver and disappearing is now minimized.
- General bug fixes and other minor improvements have also been done.

See release notes for more details.