

surgicalscience



ENDO Mentor Suite®

Introducing the Symbionix ENDO Mentor Suite

Symbionix Ingenuity in a New Suite

The ENDO Mentor Suite unifies three widely recognized Symbionix simulators into one powerful solution that is setting a new bar for endoscopy training. The GI Mentor, BRONCH Mentor and the URO Mentor provide comprehensive virtual environments, as close to a real patient as possible. Combining self-directed learning, proctored training and proficiency-based training and assessment, the ENDO Mentor Suite simulation platform provides an unmatched educational value.

This multi-specialty platform is ergonomic, space-saving and uses real endoscopes. It enables both team and individual training thus making it ideal for educational programs and training centers.

GI Mentor

The most comprehensive hands-on training for upper and lower GI endoscopy, with over 100 tasks and diagnostic / therapeutic virtual patient cases.

- Exclusive SAGES FES testing provider, as required by the ABS for all general surgery residency graduates in North America
- The most extensive curricula from basic diagnostics, through complex and emergency cases to challenging ERCP, EMR and ESD procedures
- Educational aids such as 3D anatomical map, pain indicator and virtual instructor provide dynamic feedback as to trainee decisions and actions and patient safety during case performance
- The most evidence-based simulator for GI endoscopy with over 40 studies and demonstrated skills-transfer

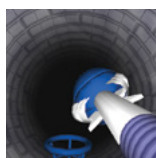


GI Express

The portable GI Mentor Express is a table-top training platform that offers true-to-life simulation training using an actual endoscope.



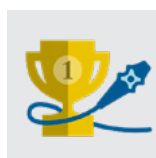
Library of Modules



CYBERSCOPY



GI ENDOSCOPY -
FUNDAMENTAL SKILLS



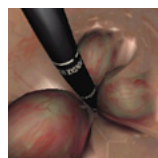
GI ENDOSCOPY SKILLS
COMPETITION



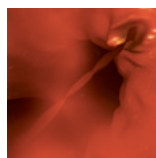
UPPER GI ENDOSCOPY



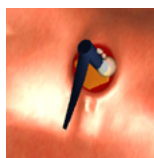
LOWER GI
ENDOSCOPY



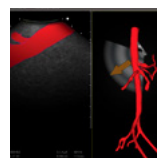
FLEXIBLE
SIGMOIDOSCOPY



EMERGENCY BLEEDING



ERCP



ENDOSCOPIC
ULTRASOUND (EUS)



EMR/ESD



BRONCH Mentor

The widely recognized gold-standard simulator for flexible bronchoscopy training and assessment.

- The most realistic and comprehensive bronchoscopic simulation, offering full procedures in an unrestricted clinical environment, complete patient management and moderate sedation of dynamic, reactive, diverse virtual patients
- Complete didactic environment enhancing the learning curve including skill targeted tasks, procedural tasks, educational aids and performance feedback
- Extensively utilized by multiple professional societies: ERS, CHEST and AABIP
- Exclusive: CHEST standardized curriculum for essential bronchoscopy skills and diagnostic bronchoscopy

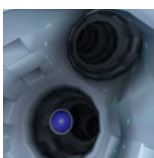


BRONCH Express

Developed in collaboration with CHEST, this portable, quickly setup platform is suitable for traveling, workshops, or demonstrations. An affordable high-fidelity trainer for bronchoscopy, including fundamental skills, diagnostic procedures and EBUS-TBNA.



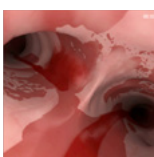
Library of Modules



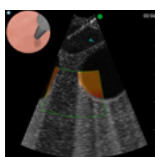
ESSENTIAL BRONCHOSCOPY



DIAGNOSTIC BRONCHOSCOPY



EMERGENCY BRONCHOSCOPY



ESSENTIAL EBUS

CHEST

The Practical Approach

| | |
|--|---|
| <p>Initial Evaluation</p> <ul style="list-style-type: none"> • Examination and functional status • Significant comorbidities • Support system • Patient preferences and expectations | <p>Procedural Strategies</p> <ul style="list-style-type: none"> • Indications, contraindications, and results • Team experience • Risk-benefits analysis and therapeutic alternatives • Informed Consent |
| <p>Techniques and Results</p> <ul style="list-style-type: none"> • Anesthesia and peri-operative care • Techniques and instrumentation • Anatomic dangers and other risks • Results and procedure-related complications | <p>Long term Management</p> <ul style="list-style-type: none"> • Outcome assessment • Follow-up tests and procedures • Referrals • Quality improvement |

E S T M

Bronchoscopy and Central Airway Disorders: A patient centered approach. Edited by Henri Cook, Septhimo Murgu, Ed ed. Elsevier Saunders, 2012

The CHEST standardized curriculum for essential bronchoscopic skills and diagnostic bronchoscopy.

Multi-specialty | Self-directed Training | Clinically Validated | Superior Realism



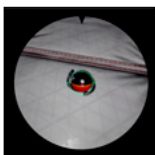
URO Mentor

The only virtual reality simulator for endourology training.

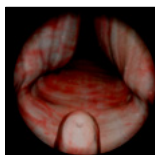
- A complete teaching and assessment curriculum from essential skills to diagnostic and therapeutic endourology procedures
- A variety of realistic scopes and endourological devices: resectoscope for BPH treatment, flexible or rigid cystoscopes and ureteroscopes, guidewires, stents, balloons, forceps, laser, EHL for stone treatment and more
- Simulated real time fluoroscopy and angiography assist in navigation for stone treatment
- Diverse patient anatomies and pathologies provide a stepwise, realistic training scenarios
- Extensively validated training value with over 40 studies



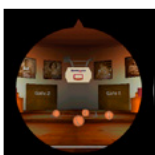
Library of Modules



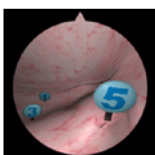
TURP BASIC SKILLS



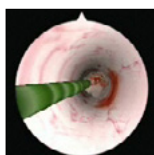
TURP PROCEDURE



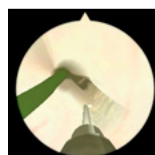
ESSENTIAL SKILLS



BASIC TASKS

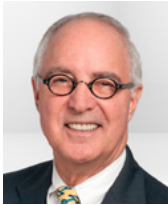


FULL PROCEDURE -
STONE MANIPULATION



FULL PROCEDURE -
STRICTURES TREATMENT





"The instruments feel and act like the real instruments that are used, and the environment is that of a patient in which we are performing a procedure. The surgeon or endoscopist can practice over and over again in this environment to understand how the procedure can be performed and improved on a continuous basis."

Jeffrey Ponsky, MD

Cleveland, OH



"Training on our GI-BRONCH Mentor has been worked into the Family Medicine Resident Curriculum. Additionally, Pulmonary Critical Care Fellowship as well as Emergency Medicine Residency Program have incorporated the BRONCH Mentor modules into the training of their cohorts. The simulator has especially been a great asset to our Surgery Residents, who've benefited from being able to practice on the Fundamentals Skills Module before sitting for their FES Exam."

Elizabeth Young

Simulation Program Specialist LSU Health Shreveport
Shreveport, LA



"I am a Program Director for a Family Medicine Residency Program. All of my residents who want to learn GI endoscopy have to complete all the modules on the GI Mentor simulators before they can begin live patient endoscopy. It has made a major difference in their learning curve...especially been a great asset to our Surgery Residents, who've benefited from being able to practice on the Fundamentals Skills module before sitting for their FES Exam."

Dr. Robert Schneider

DO, FAAFP, NRMC Family/Integrated Medicine
Residency Assistant Professor, A.T. Still University
Kirksville, MD

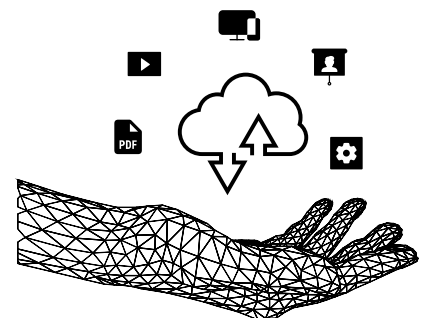
"The URO/PERC Mentor simulator is successfully used to assess percutaneous renal access (PCA) skills of urology postgraduate trainees (PGTs) during the Objective Structured Clinical Examinations (OSCEs) as demonstrated in recent study."

McGill University Health Center

Montreal, Canada

 **MentorLearn Cloud**

Ask how the MentorLearn Cloud simulator curricula management system can support your Symbionix simulator. MentorLearn's many capabilities include remote simulator administration, online learning, anywhere results monitoring, proficiency based hands-on training, as well as simulation video capture that is ideal for debriefing.





"The GI-BRONCH Mentor is absolutely vital to our simulation curriculum. Practicing on the simulator gives the residents and medical students a lot of confidence going into the actual tests. We chose the GI-BRONCH Mentor as it has the widest array of interesting cases in addition to ample teaching modules to enhance skills training."

Dr. Michael Ujiki

Director, Simulation Lab
NorthShore University HealthSystem
Chicago, IL



"Using the BRONCH Mentor and the BRONCH Express in our facility has enabled our trainees to rapidly acquire and adopt safe and efficient bronchoscopy habits. The use of the simulation software facilitates a deeper understanding of anatomic relationships in a low stakes environment that is very conducive to learning. With comprehensive hands-on training using a graduated curriculum, deliberate practice and objective performance metrics, the path to proficiency is a carefully monitored one, and our patients have to carry less of the burden of the procedural learning curve."

George A. Eapen, MD, FACP, FCCP, Professor of Medicine

Section Chief, Interventional Pulmonology Program Director
Interventional Pulmonology Fellowship Program
Department of Pulmonary Medicine
MD Anderson Cancer Center
Houston, TX



"At Loyola University of Chicago Stritch School of Medicine's Advanced Procedure Education Lab we have a state-of-the-art GI-BRONCH Mentor trainer. It's an invaluable tool for resident and fellowship training offering 24-hour access to life-like simulation that helps immensely with patient safety and care."

Anthony Dwyer

Clinical Skills, Loyola University, Stritch School of
Medicine, Chicago, IL

surgicalscience



Would you like to hear more about how your organization can benefit from simulation? Please get in touch, we'd love to hear from you.
Request a demo at info@surgicalscience.com